



# ALAMANCE COUNTY LAND DEVELOPMENT PLAN PLANNING PROCESS

## WHAT IS A LAND DEVELOPMENT PLAN?

The County of Alamance is preparing a **Land Development Plan** to better direct the future of Alamance. This project will update the existing plan from 2007 to **better respond to today's growth patterns** and market demands. A land development plan is a tool used by local governments as the **principal tool for community planning** and promotes the public health, safety, and welfare of residents. The final product will serve as a new tool to inform **land development, infrastructure investment, and quality of life** that will honor the county's rural heritage.

The goal is to improve the quality of life for residents and businesses. This project is **collaborative** and presents an opportunity for residents and other stakeholders to have a say in the county's future growth, development, and quality of life. An effective Land Development Plan will present a **vision** for both growth and conservation that will **reflect Alamance's unique identity and goals**.



### PROJECT SCHEDULE

We anticipate the following schedule for the Land Development Plan & Small Area Plan Vision:

#### Proposed Scope of Work

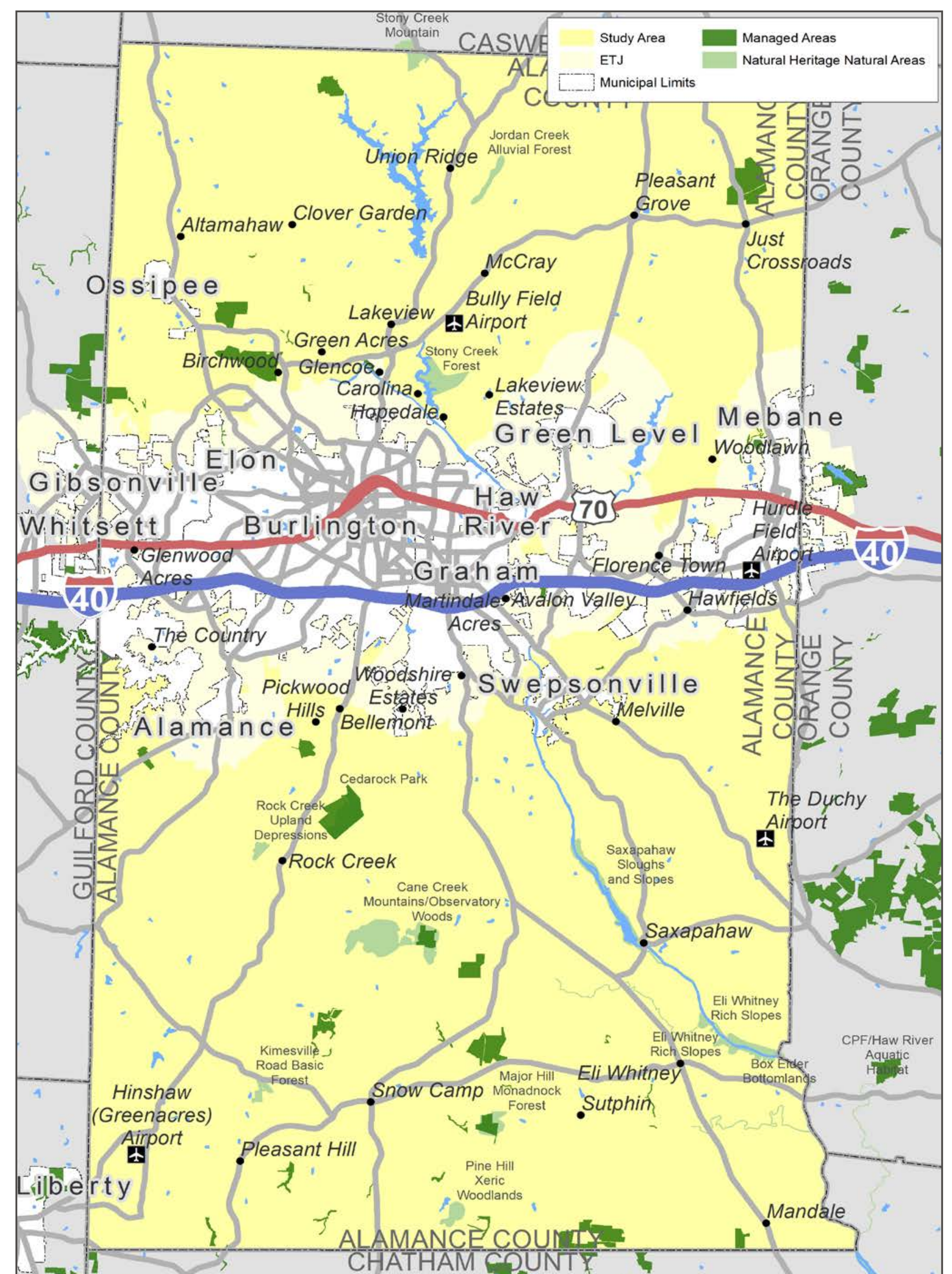


#### Proposed Schedule



#### Meetings & Milestones

<ul style="list-style-type: none"> <li>Kick-off Meeting</li> <li>County Tour</li> <li>Stakeholder Interviews</li> <li>Plan Review</li> <li>Data Request</li> </ul>	<ul style="list-style-type: none"> <li>Steering Committee #1</li> <li>Analysis Maps</li> <li>Land Use Suitability</li> </ul>	<ul style="list-style-type: none"> <li>Steering Committee #2</li> <li>Community Summit</li> <li>Charrette / Public Meetings</li> <li>Survey</li> <li>Identify Priorities</li> <li>Preliminary Recommendations</li> </ul>	<ul style="list-style-type: none"> <li>Steering Committee #3 &amp; 4</li> <li>Future Land Use Map</li> <li>Character Area Descriptions</li> <li>Concept Plans</li> <li>Draft Plan Document</li> </ul>	<ul style="list-style-type: none"> <li>Steering Committee #5</li> <li>Implementation Matrix</li> <li>Adoption Meetings</li> <li>Final Deliverables</li> </ul>
--	--	--	---	---



## STAY IN TOUCH

Project Website:

<https://www.alamancecountyplan.com/>

Check for updates on upcoming survey launch and public meetings and join the mailing list!

